

Schlumberger

GEOFRAME
PROCESSED
INTERPRETATION

BestDT* sonicVision Processing

Run 3 : 1430m - 2165m (1/500)

* A Mark of Schlumberger

Using the following logs: sonicVision

COMPANY: BEACH PETROLEUM
WELL: PEEJAY-1
FIELD: WILDCAT
RIG: WEST TRITON
STATE: TASMANIA
COUNTRY: AUSTRALIA
Date Logged: 27-NOV-2008
Well Location: BASS STRAIT
Date Processed: 28-Nov-2008

Elevations: KB: 34.15m GL: -78m

API Number: 08ASQ0031

FOLD HERE The well name, location and borehole reference data were furnished by the customer.

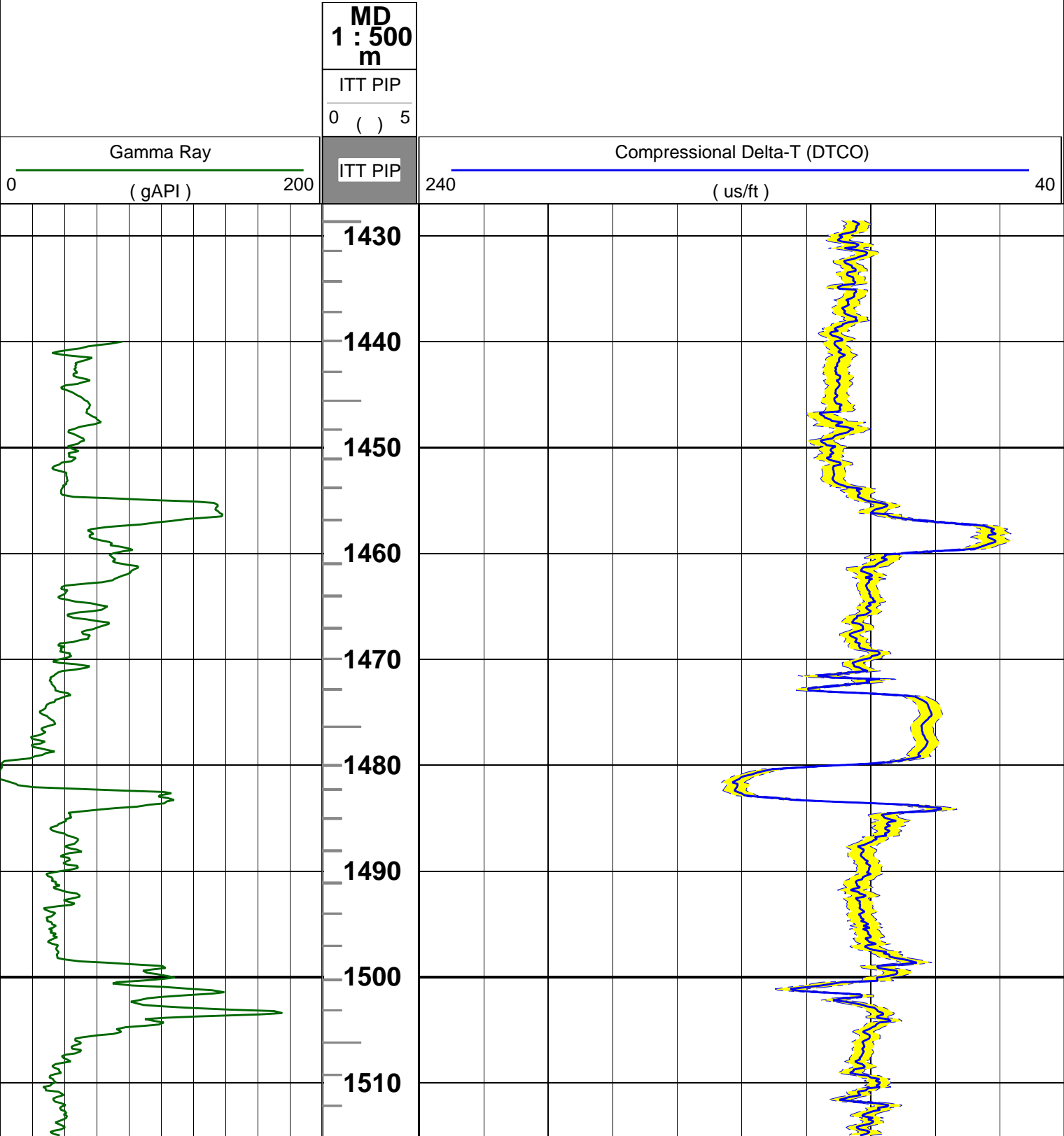
All interpretations are opinions based on inferences from electrical or other measurements and we cannot, and do not guarantee the accuracy or correctness of any interpretation, and we shall not, except in the case of gross or willful negligence on our part, be liable or responsible for any loss, costs, damages or expenses incurred or sustained by anyone resulting from any interpretations made by any of our officers, agents or employees. These interpretations are also subject to Clause 4 of our General Terms and Conditions as set out in our current Price Schedule.

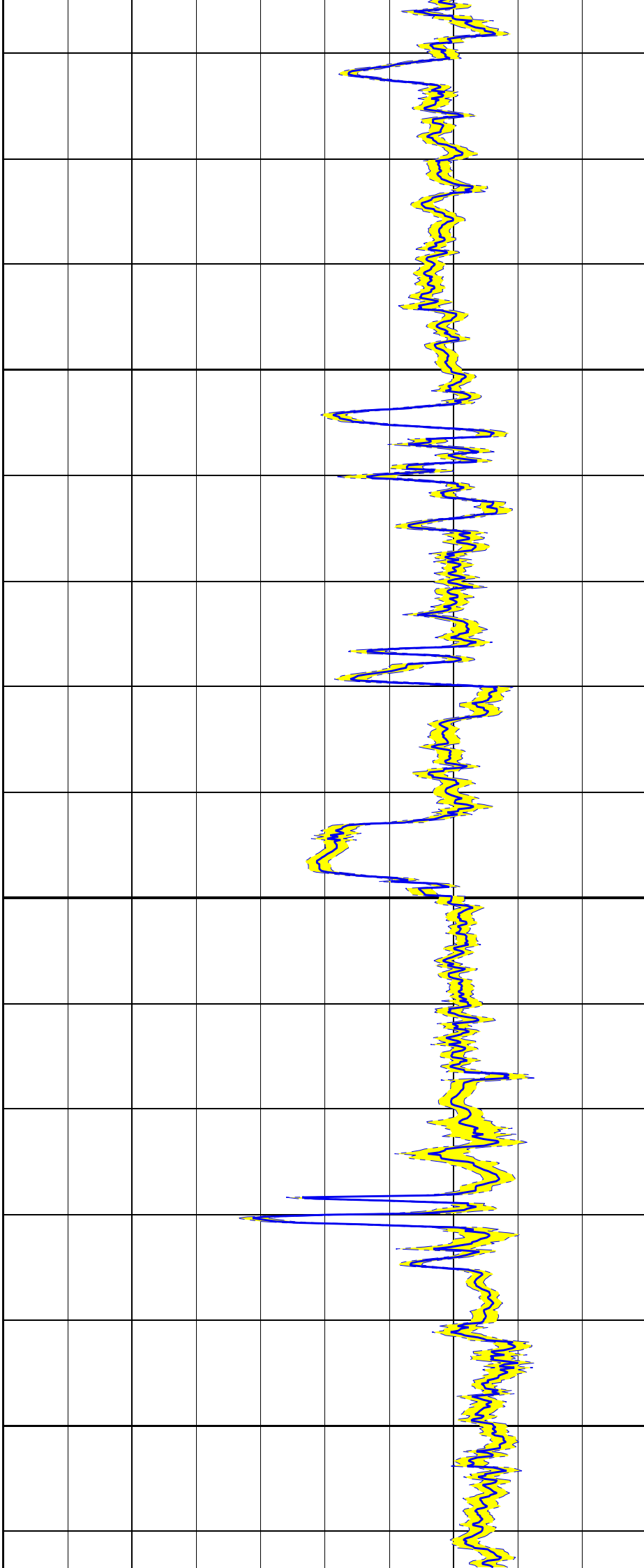
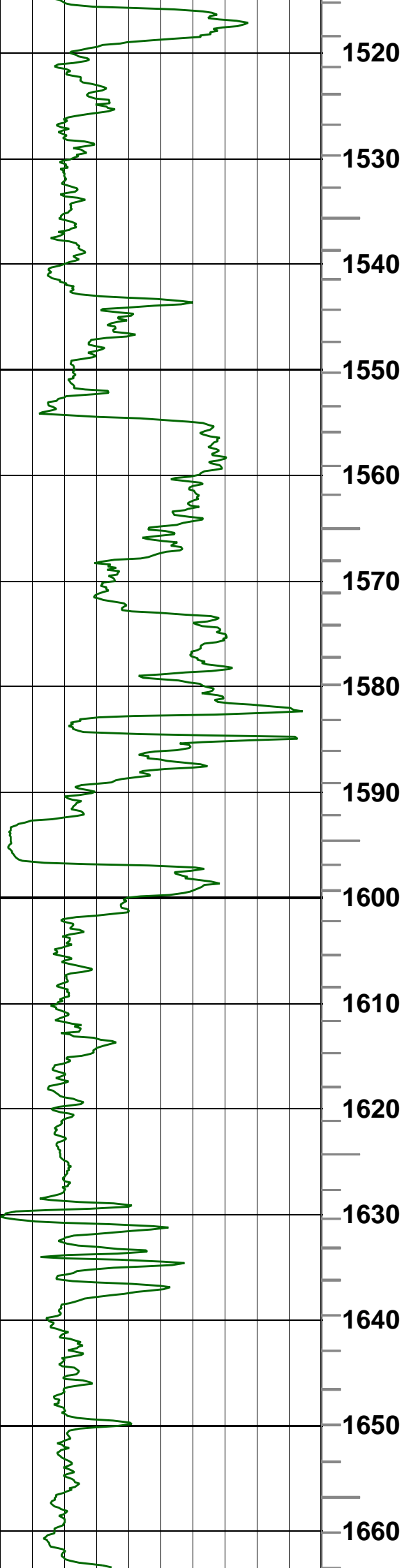
Field Recording:	Location:	Software Version: 13X0-101	Engineer: MARGANDA
Office Recording:	ICS Center: Melbourne	Baseline: GF 4.4 DC2	Log Analyst: A. Datey
Mud and Borehole Measurements:			
Rm @ Measured Temperature:	@	BHT:	Bitsize: 12.25in
Rmf @ Measured Temperature:	@	Type Fluid in Hole:	WATER BASE MUD
Rmc @ Measured Temperature:	@	Mud Density: 1.13835g/cm3	

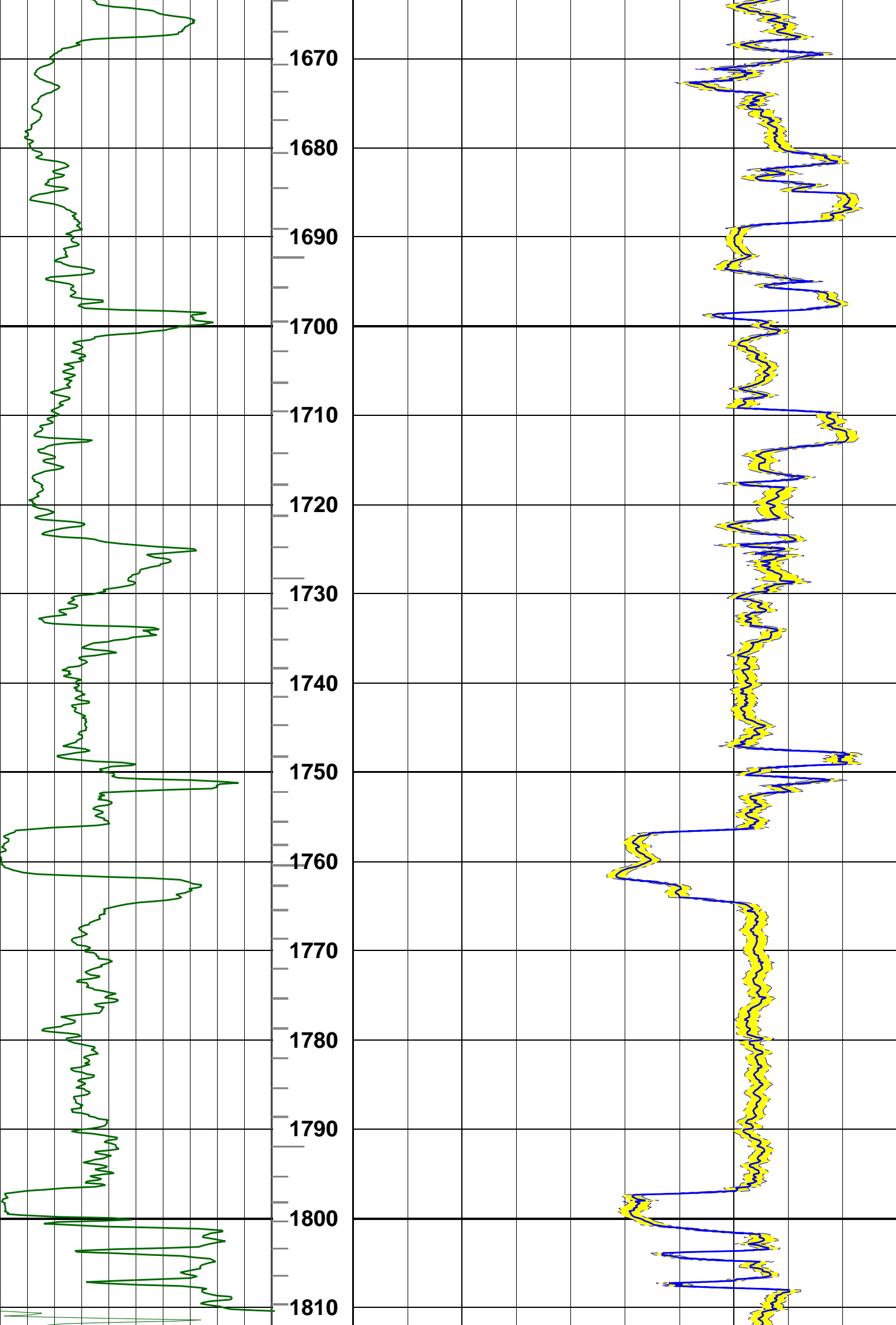
Remarks:

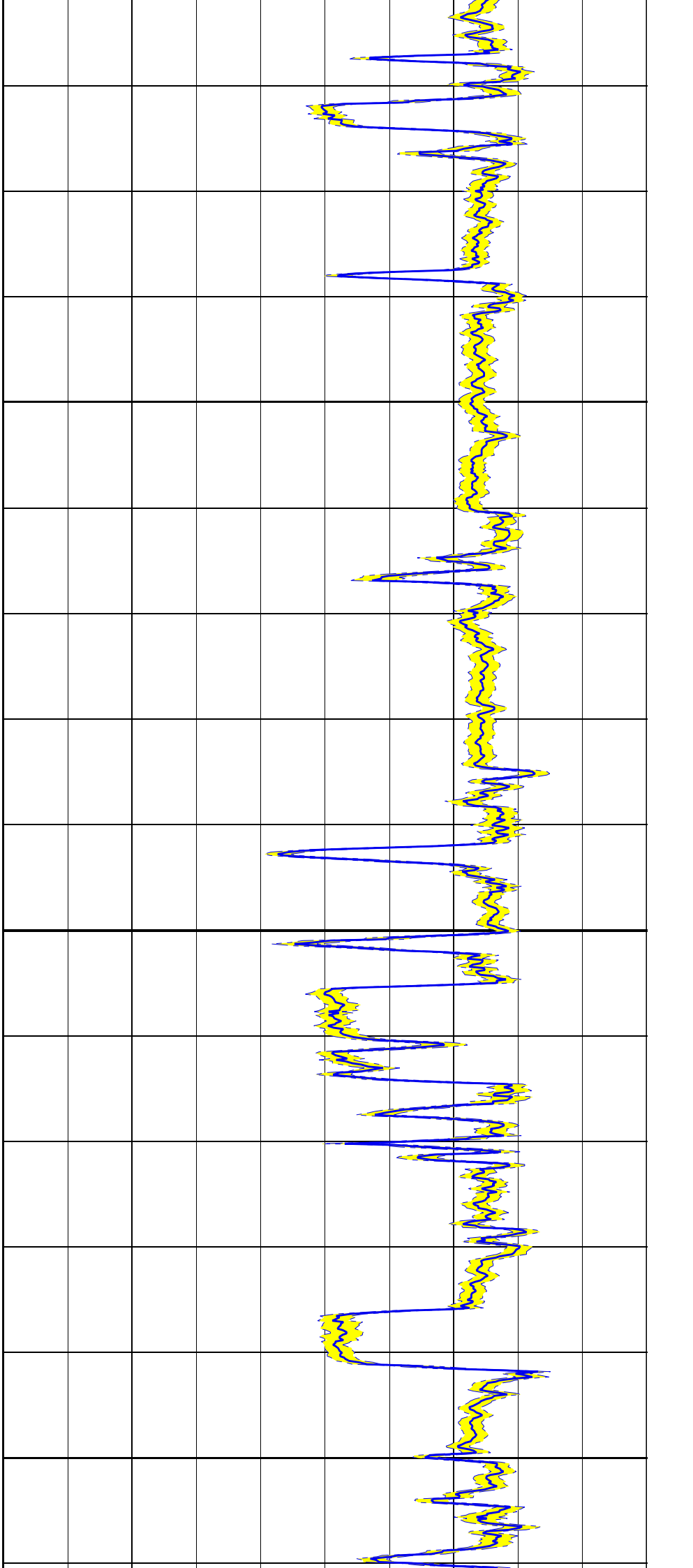
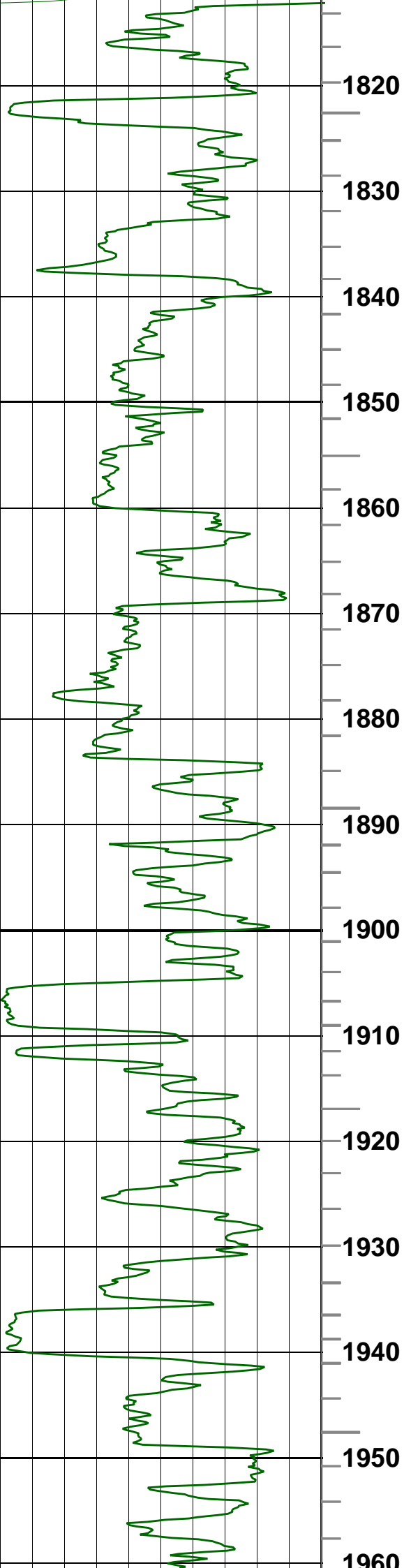
sonicVision 8 run in hole drilled with 12.25" bit
See bottom of the QC log for processing parameters.
DT Compressional value in Coal intervals might not be accurate.

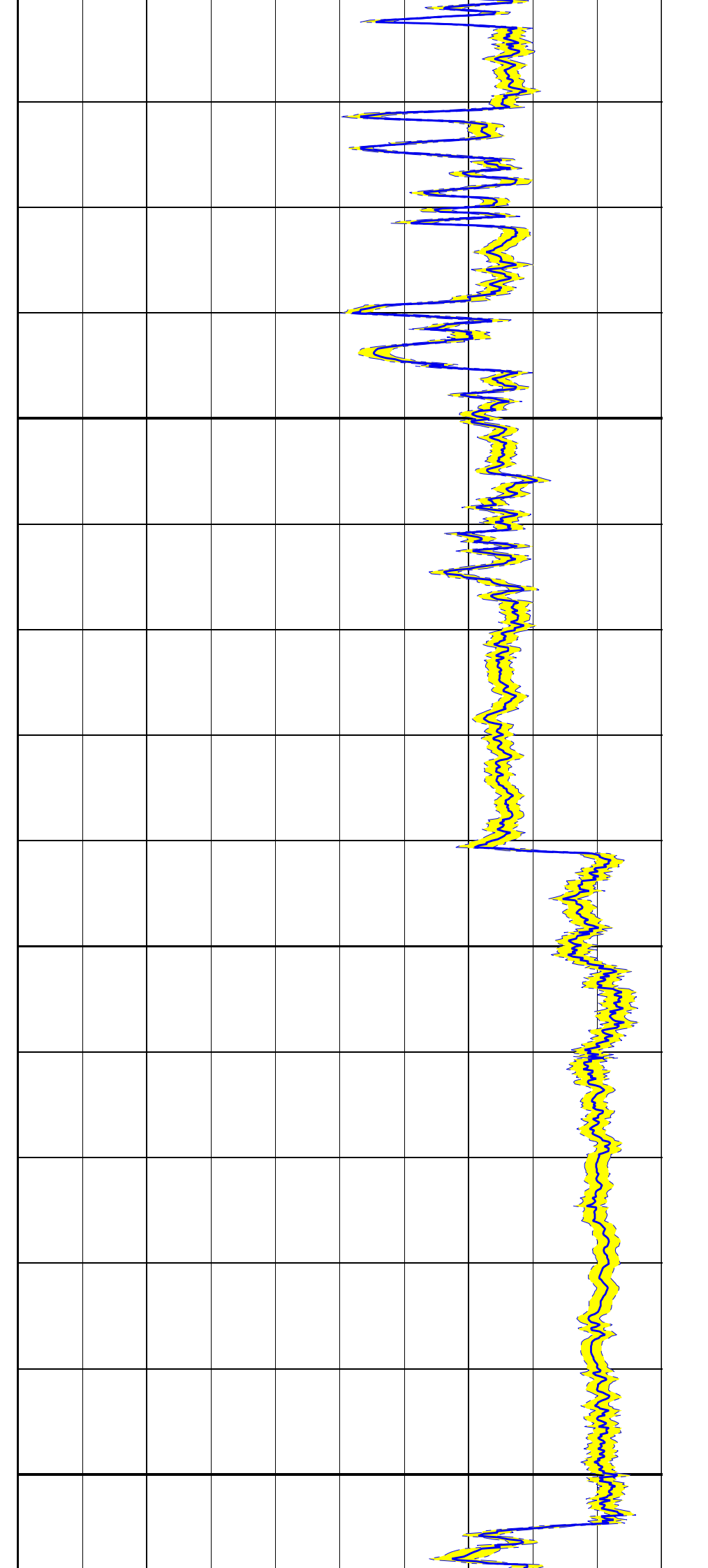
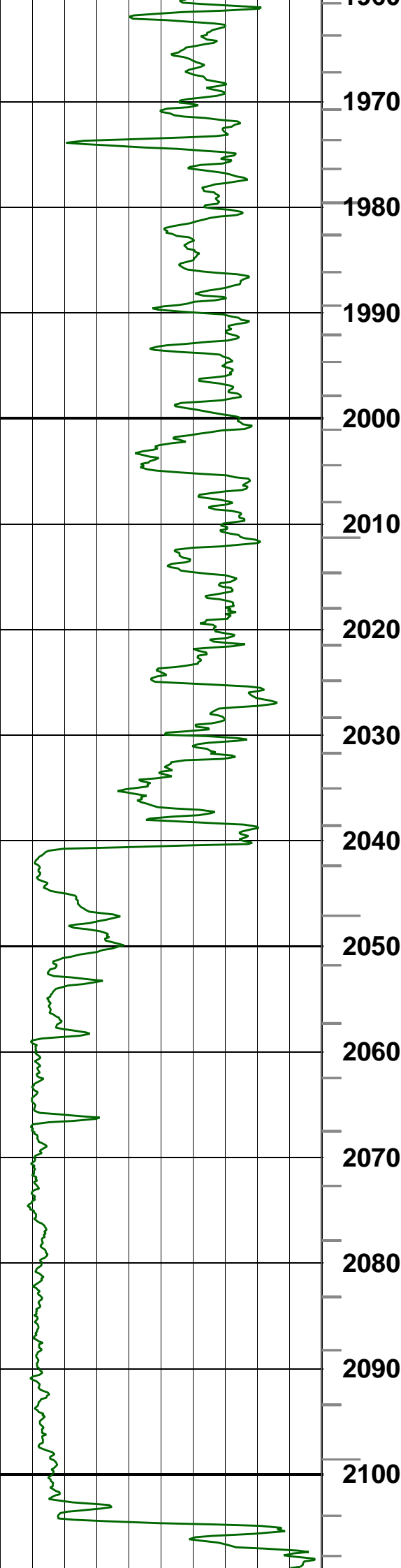
ITT PIPS - Small : 1ms ; Large : 10ms

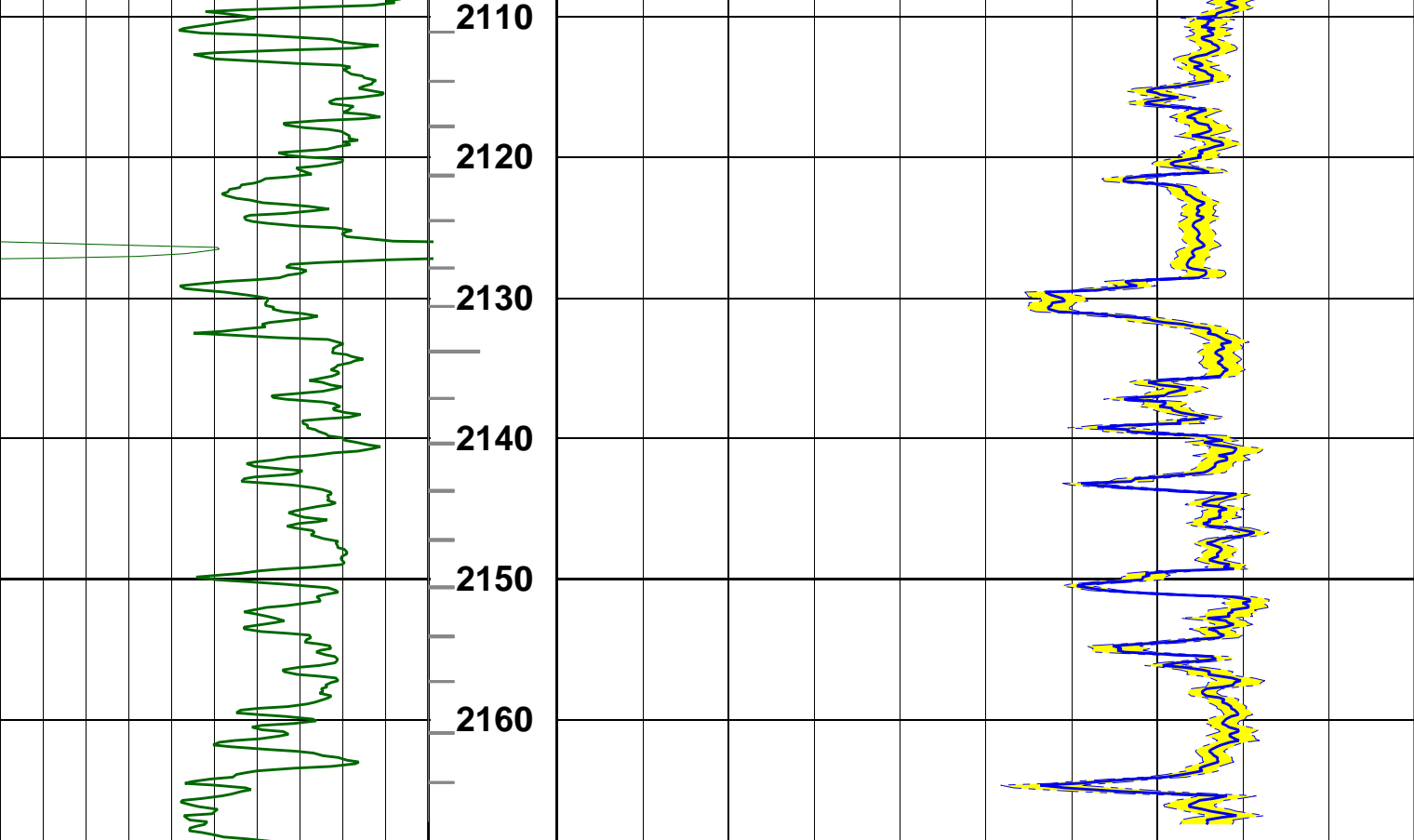






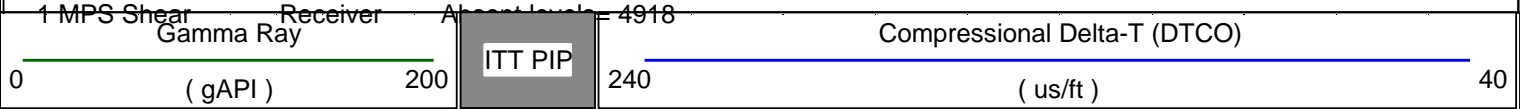






--- Finalization Result ---

1 MPS Compressional Receiver Absent levels= 90
1 MPS Compressional Transmitter Absent levels= 305
1 MPS Shear Receiver Absent levels= 4918



ITT PIP

ITT PIP

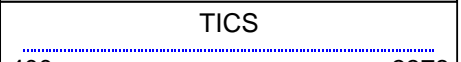
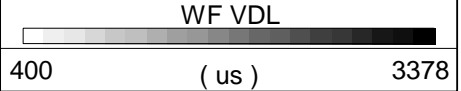
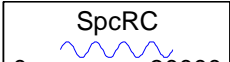
0 () 5

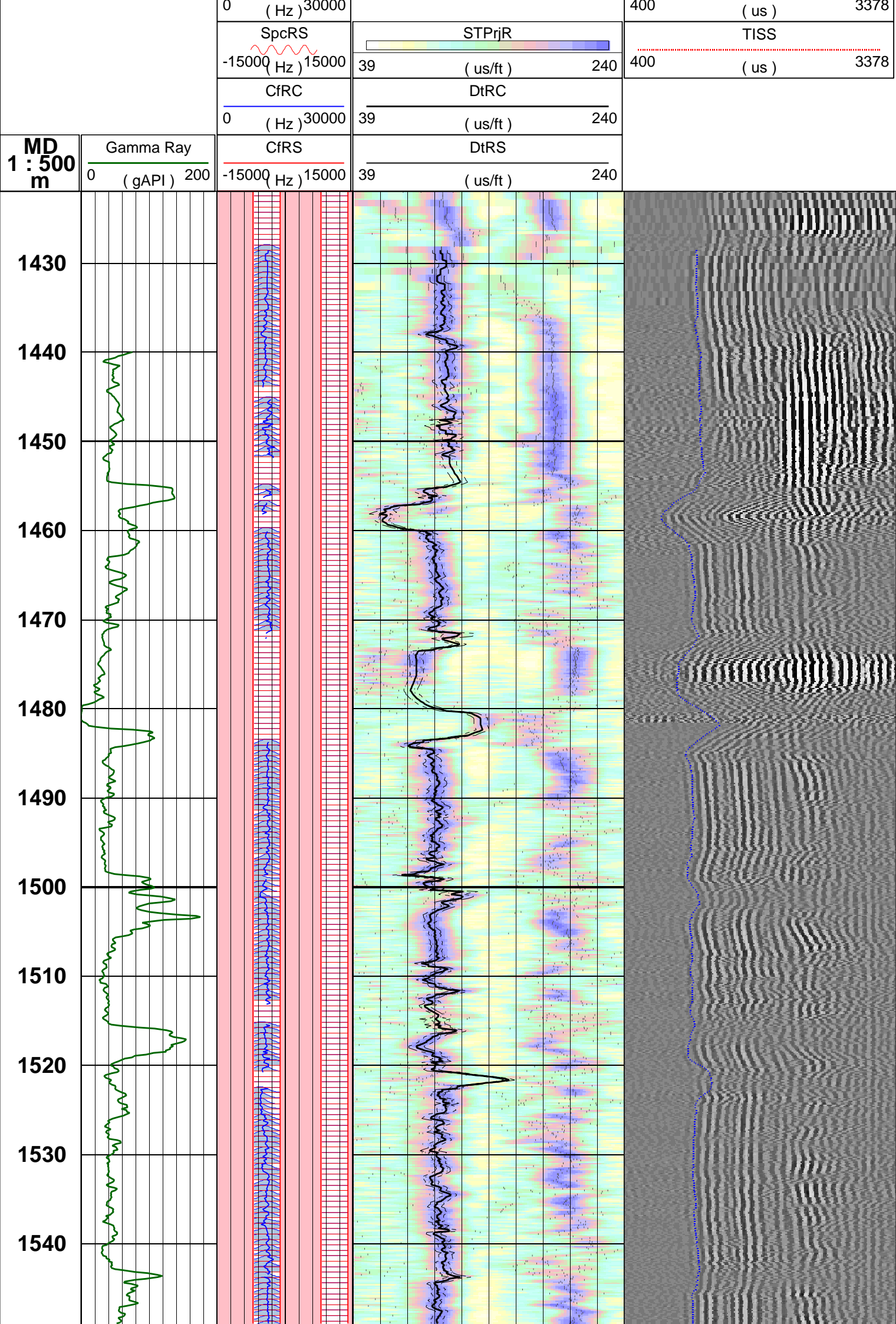
MD

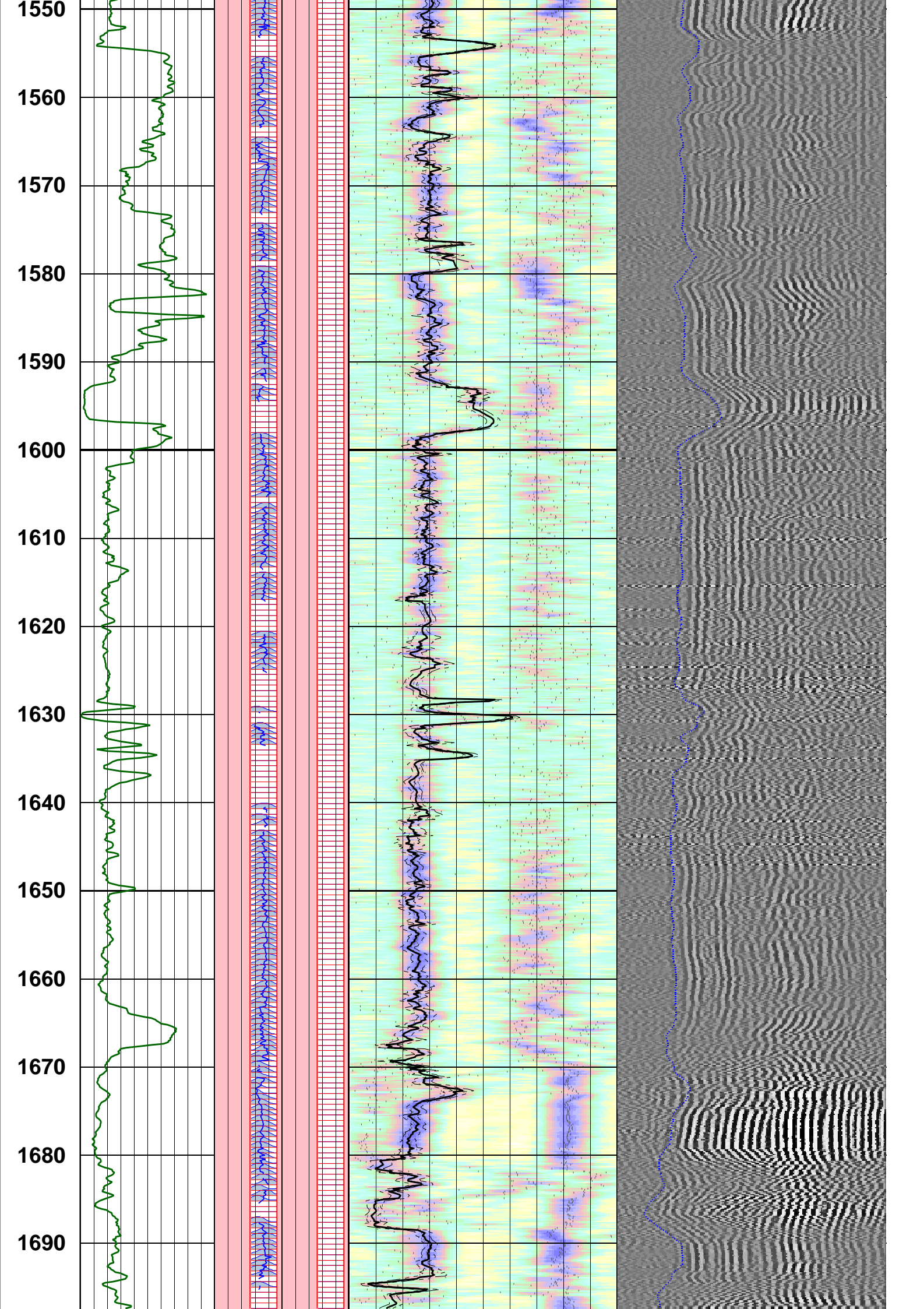
1 : 500

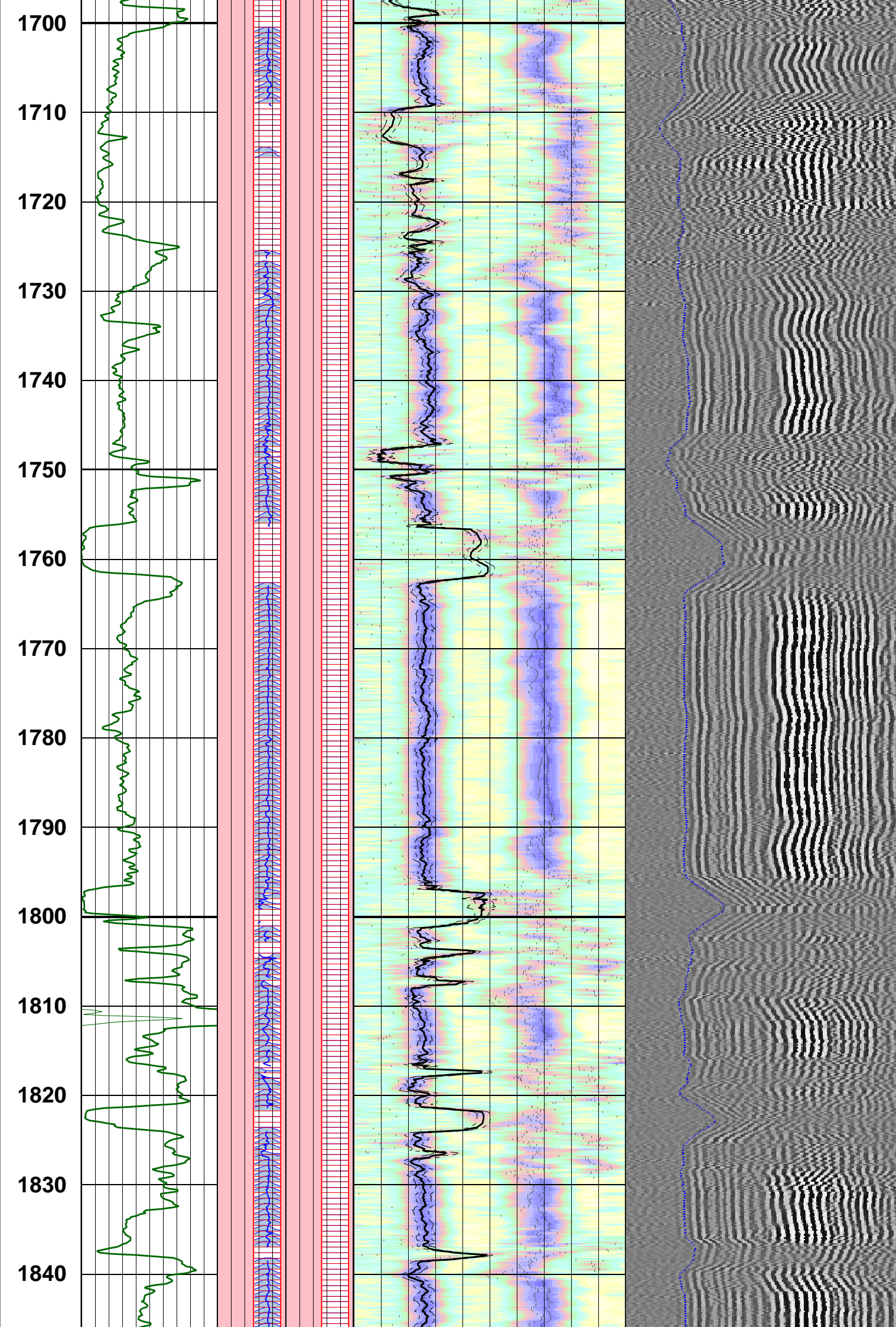
m

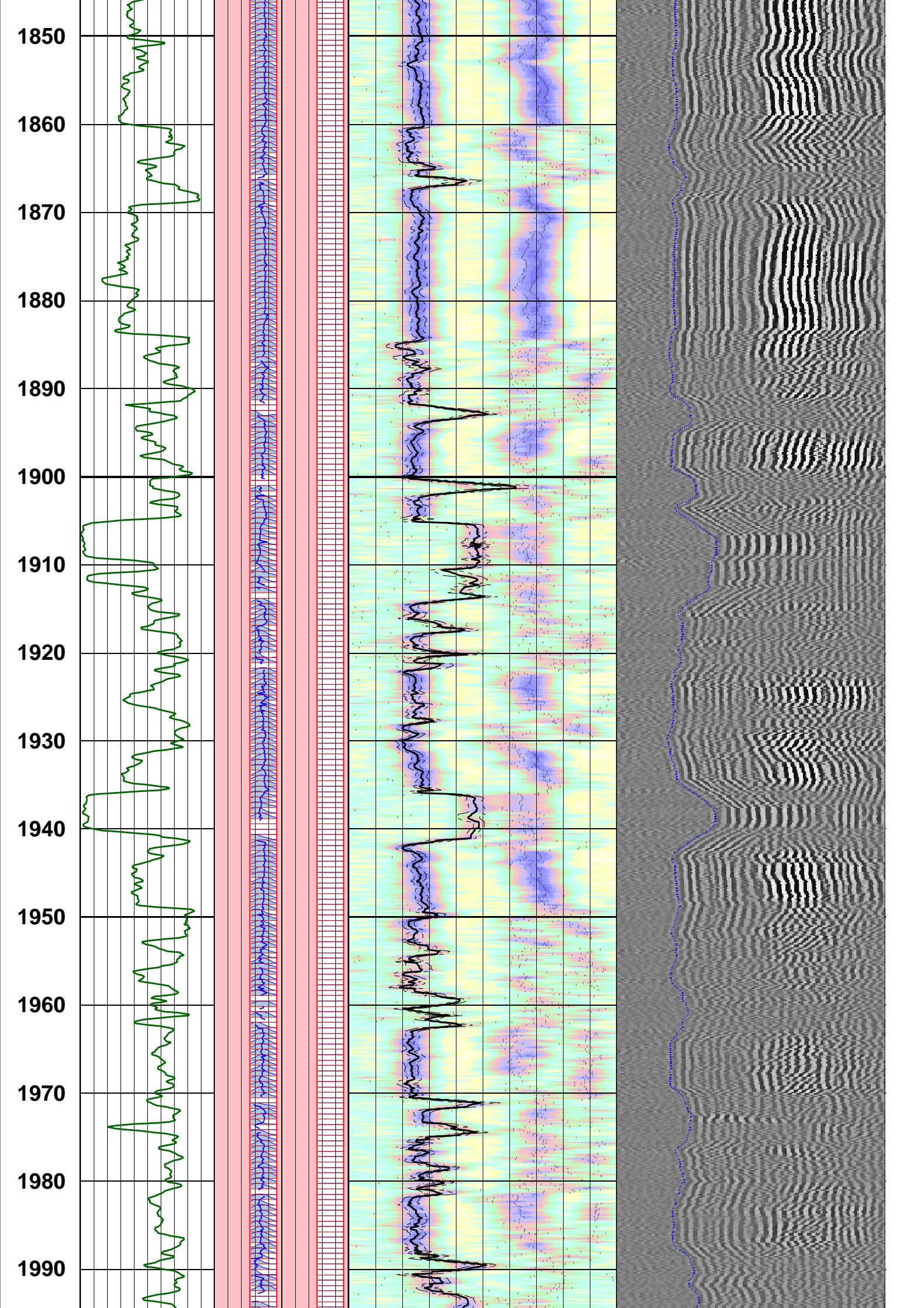
Monopole Compressional Processing QC

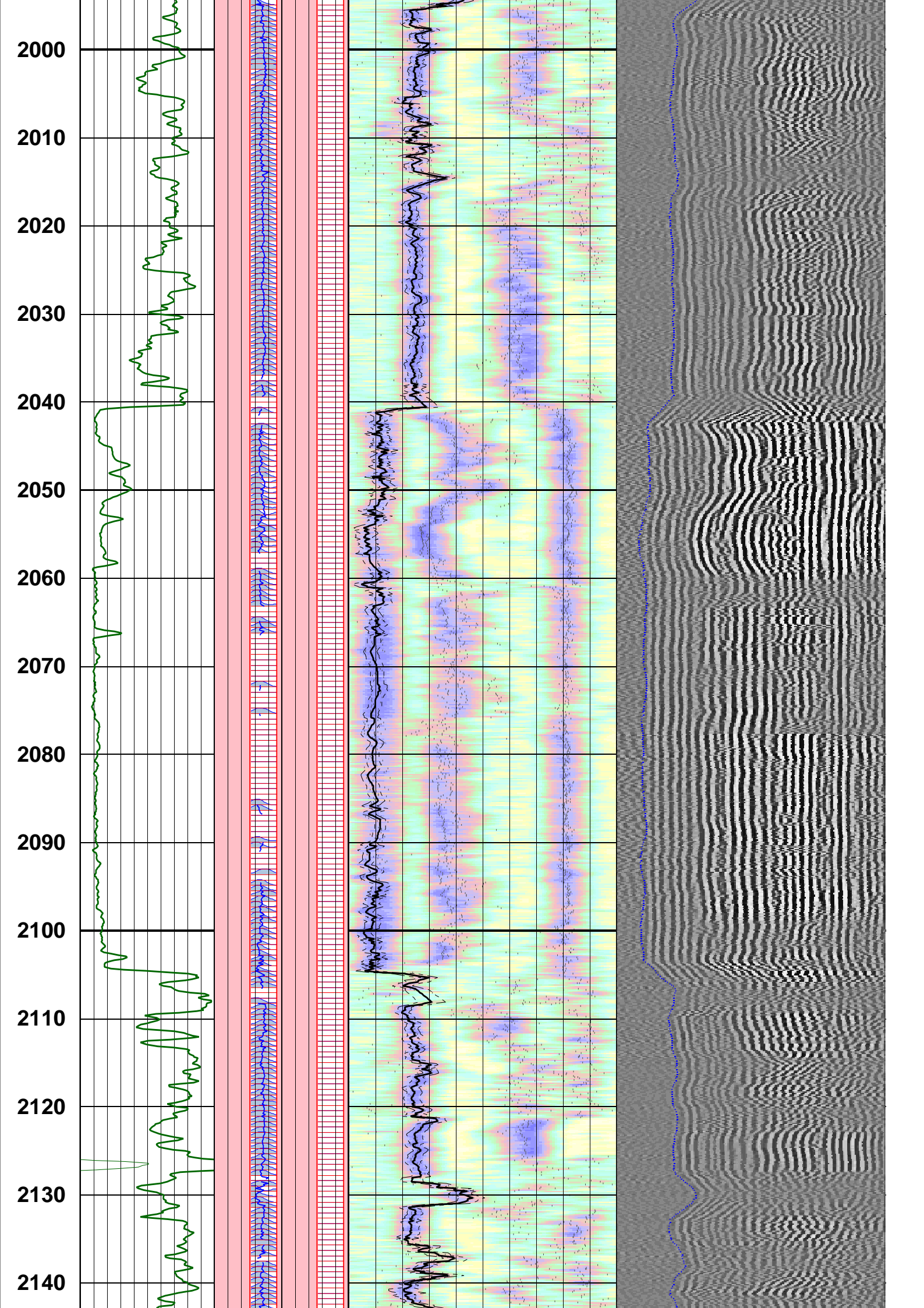


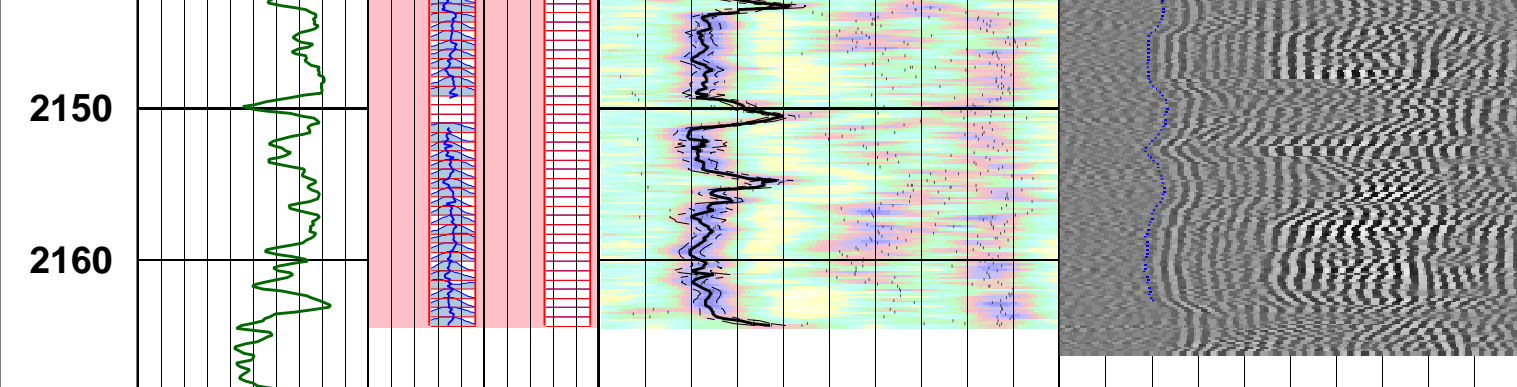




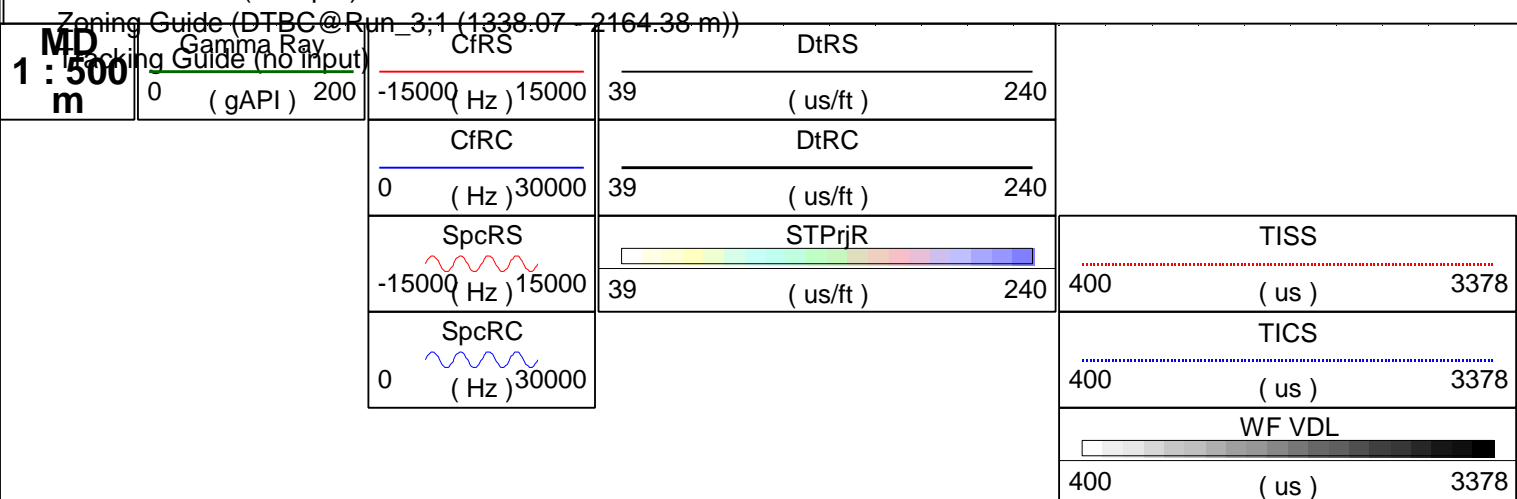








Customized Process: Start Depth (2167.44 m), Stop Depth (1415.03 m), Logging Mode (sonicVISION - MPS_WIDE)
Noise Cut Filtering(No), Casing Cut Filtering(No)
WF_FLG(1 1 1 1), MUD_TYPE(WBM), DTMUD(195), STCAL(Full Array)
TRSPAC(3.05714), RRSAPAC(0 0.2032 0.4064 0.6096)
Hole Diameter (no input)



Company:	BEACH PETROLEUM		
Well:	PEEJAY-1		
FIELD:	WILDCAT		
RIG:	WEST TRITON		
STATE:	TASMANIA		
Date Logged:	27-NOV-2008	Date Processed:	28-Nov-2008
Well Location:	BASS STRAIT		
Elevations:	KB: 34.15m	GL:	-78m
API Number:	08ASQ0031		

Schlumberger